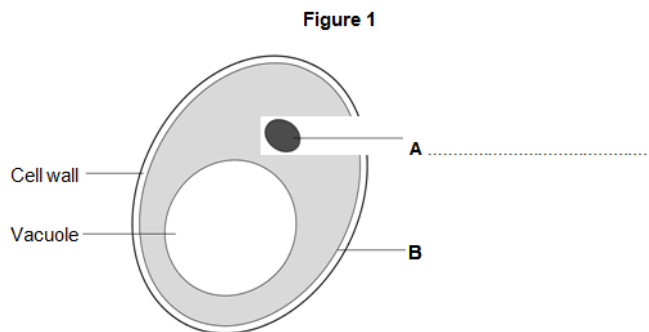


# Stem Cells

**Q:1** Human cells and yeast cells have some parts that are the same.

**(a)** Figure 1 shows a yeast cell.

Figure 1



Parts A and B in Figure 1 are found in human cells and in yeast cells.

On Figure 1, label parts A and B.

**[2 marks]**

**(b)** Many types of cell can divide to form new cells.

Some cells in human skin can divide to make new skin cells.

Why do human skin cells need to divide?

---

---

**[1 mark]**

**(c)** Human stem cells can develop into many different types of human cell.

**(c) (i)** Use the correct answer from the box to complete the sentence.

embryos	hair	nerve cells
---------	------	-------------

Human stem cells may come from \_\_\_\_\_

[1 mark]

(c) (ii) Use the correct answer from the box to complete the sentence.

cystic fibrosis	paralysis	polydactyly
-----------------	-----------	-------------

Human stem cells can be used to treat \_\_\_\_\_

[1 mark]

**TOTAL MARKS=5**