

Charts and Carroll Diagram

- 10 children took a English test that was marked out of 5.
Here are their scores. 3, 2, 5, 4, 3, 1, 4, 5, 2, 3

Fill in the tally chart below.

1. Write all the scores in order, from lowest to highest.	Score	Tally	Frequency
2. What is the mode of the scores?	1		
3. What is the range of the scores?	2		
4. What is the median of the scores?	3		
5. What is the mean of the scores?	4		
	5		

Here are the levels of 20 students in SATS.
2, 5, 4, 3, 5, 3, 4, 5, 4, 3, 2, 5, 4, 4, 3, 5, 4, 3, 2, 5

6. Complete the tally chart.	Score	Tally	Frequency
7. What is the mode of the scores?	1		
8. What is the range of the scores?	2		
9. What is the median of the scores?	3		
10. What is the mean of the scores?	4		
	5		

- Put the following numbers into the correct place on Carroll diagram A:

1	2	3	4	7	9	12	16
21	25	36	48	49	50	81	100

	Carroll Diagram A	Square Numbers	Not Square Numbers
11.	Even Numbers		
12.	Not Even Numbers		

- Put the following numbers into the correct place on Carroll diagram B:

1	2	3	4	5	6	10	14
15	20	21	27	28	35	47	55

	Carroll Diagram B	Multiples of 5	Not Multiples of 5
13.	Even Numbers		
14.	Not Even Numbers		

- Put the following numbers into the correct place on Carroll diagram C:

1	2	3	4	5	6	10	14
---	---	---	---	---	---	----	----

	Carroll Diagram C	Factors of 24	Not factors of 24
15.	Even Numbers	.	
16.	Not Even Numbers		

➤ Put the following numbers into the correct place on Carroll diagram D:

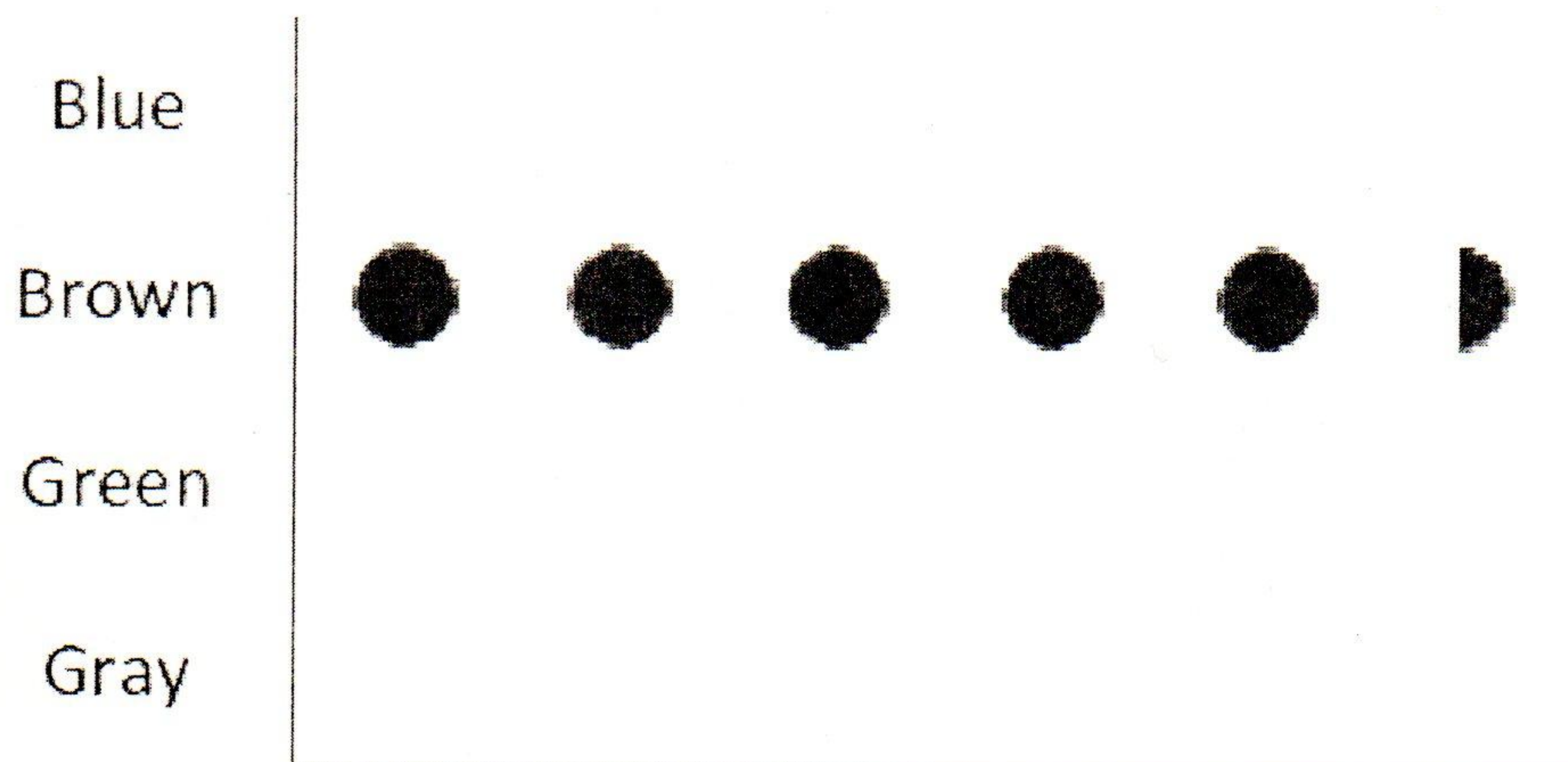
1	2	6	7	15	18	21	25
28	32	35	39	45	49	62	84

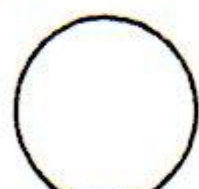
	Carroll Diagram D	Multiples of 7	Not Multiples of 7
17.	Even Numbers		
18.	Not Even Numbers		

➤ Children at Fine’s school were questioned about their favourite colour.

Colour	Tally	Frequency
Blue		
Brown		
Green		
Gray		

19. How many children like Blue best?
20. How many prefer Brown?
21. How many prefer Gray?
22. How many more children like Brown best than Green?
23. How many more children like Blue best than Green?
24. How many more children like Blue best than Gray?



25. Using the tally chart above, complete the pictogram above. One circle  represents 4 people.

26. How many more children have blue eyes than green eyes?

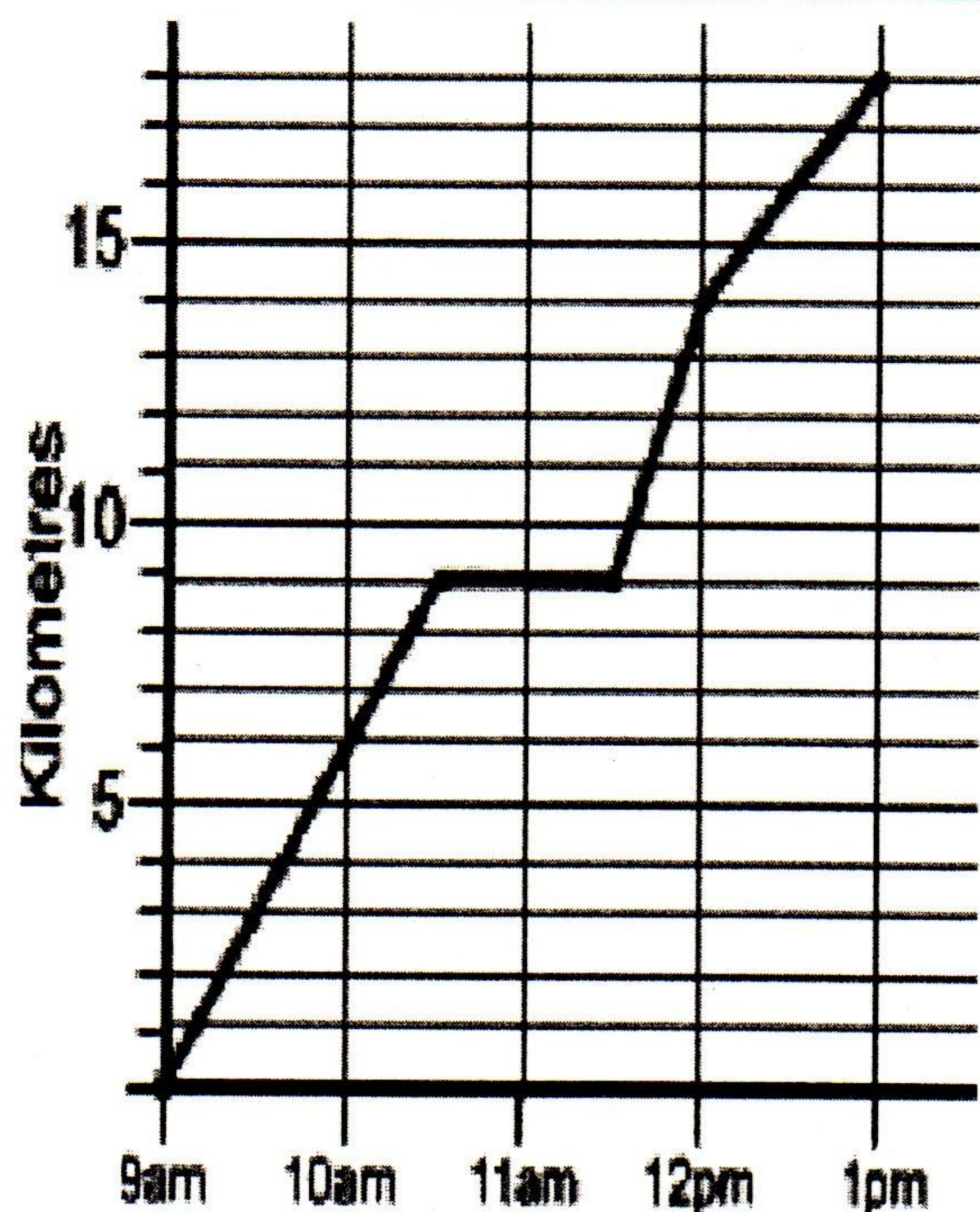
The line graph shows Karim's bicycle ride. Answer the following questions using the data in the graph.

27. How many kilometres did Karim ride his bicycle?

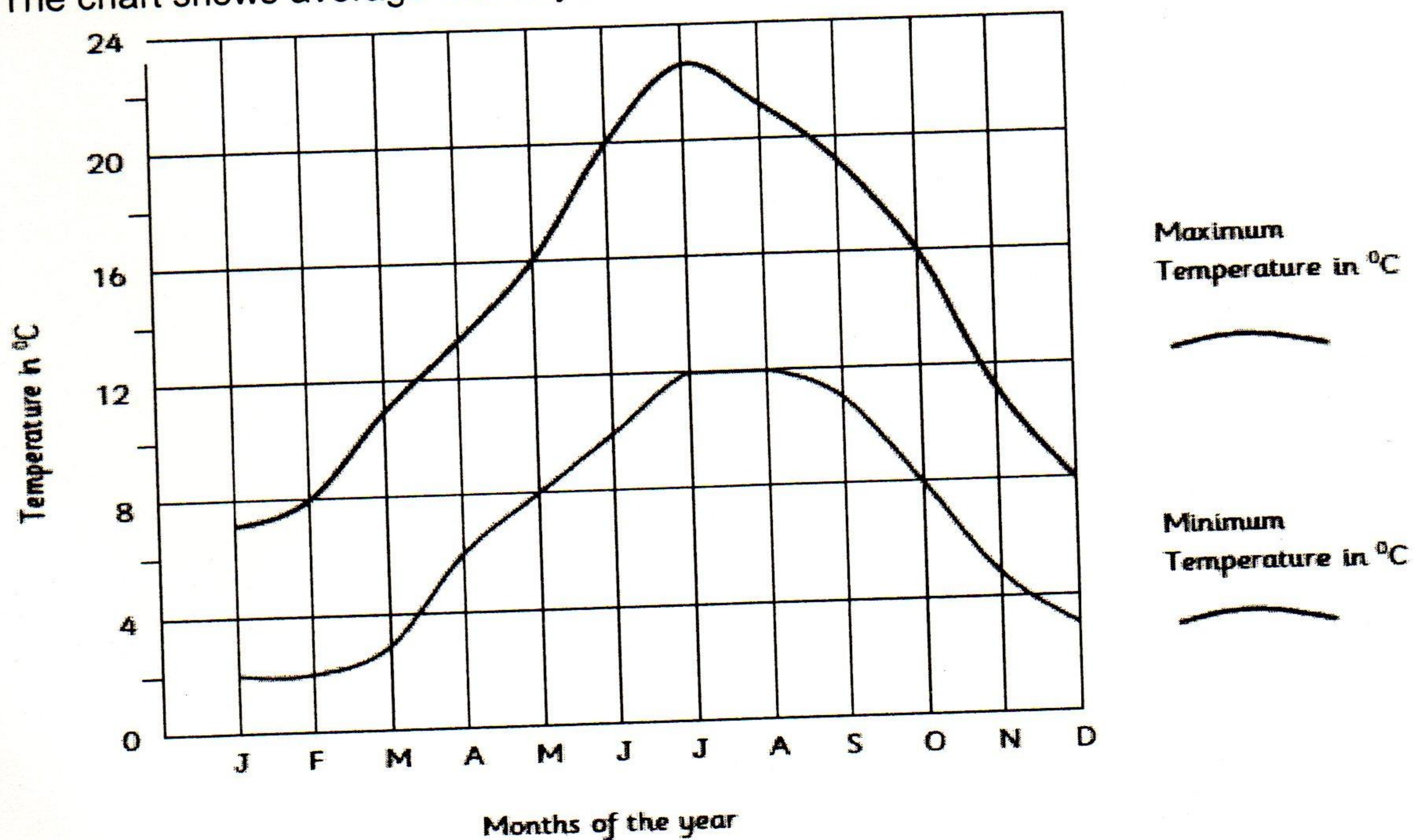
28. What did Karim do from 10.30 to 11.30 a.m.?

29. How many kilometres did Karim travel from 9am to 10am.

30. How many kilometres an hour did Karim travel on average?



The chart shows average monthly maximum and minimum temperature in London



31. What does the red line represent on the graph?

32. What is the average minimum temperature in January?

33. Which month has the highest maximum temperature?

34. What is the difference between the maximum and minimum temperatures in May? _____

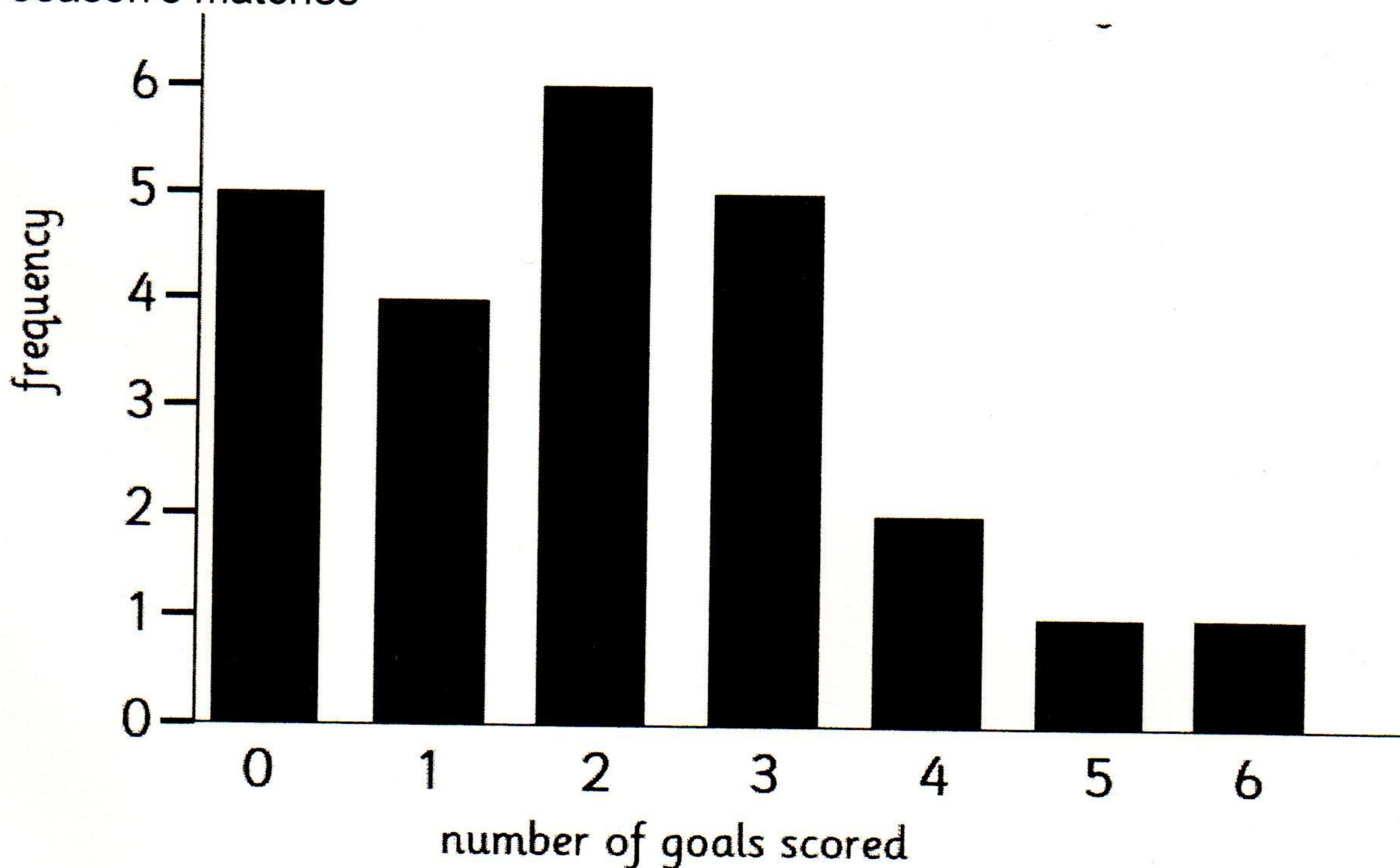
35. How much more is the minimum temperature in June than February? _____

36. Which month has the greatest difference between maximum and minimum temperatures? _____

37. Which two months have a minimum temperature of 80 ?

38. Which months is the maximum temperature above 170 ?

This bar chart shows the number of goals scored by The Albion in last season's matches



39. How many times did the Albion not score a goal in a match?

40. How many times did the Albion score 4 or more goals in a match?

41. What was the most common number of goals in match (the mode)?

42. How many matches in total did Albion play?

43. What was the maximum number of goals they scored in one match?

44. How many goals did they score altogether in the season?

45. Do you think they had a successful season? Why?